

Sage 50 Login Error

Disclaimers

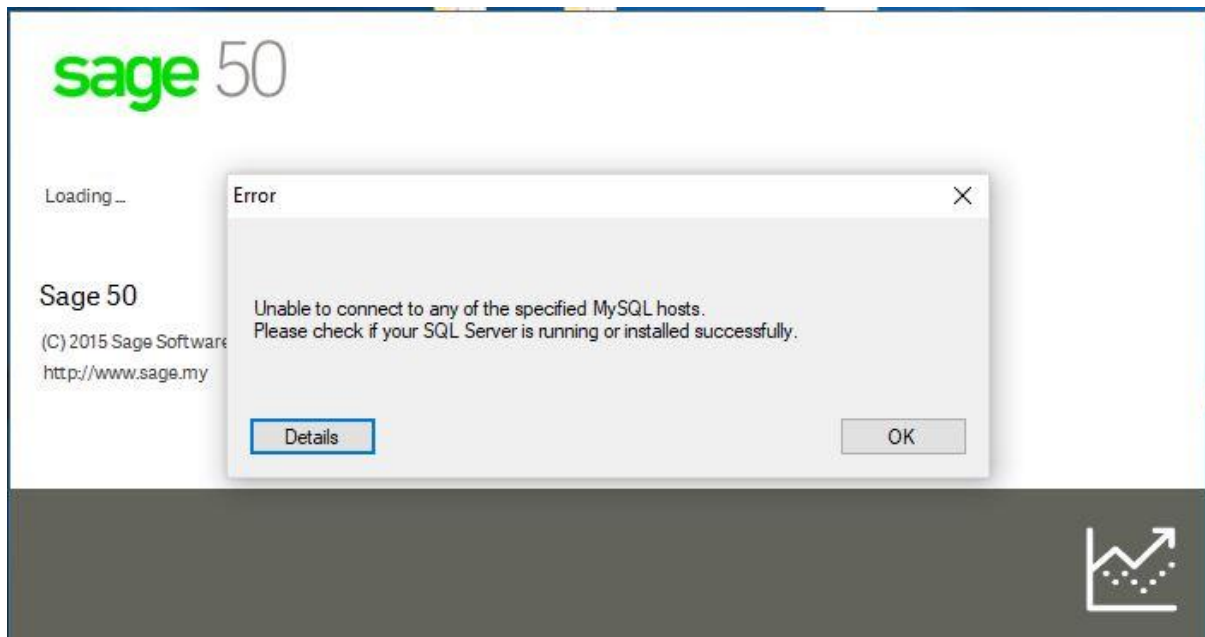
The information contained in this document is the proprietary and exclusive property of Sage Software Sdn. Bhd. except as otherwise indicated. No part of this document, in whole or in part, may be reproduced, stored, transmitted, or used for design purposes without the prior written permission of Sage Software Sdn Bhd. The information contained in this document is subject to change without notice. The information in this document is provided for informational purposes only.

Privacy

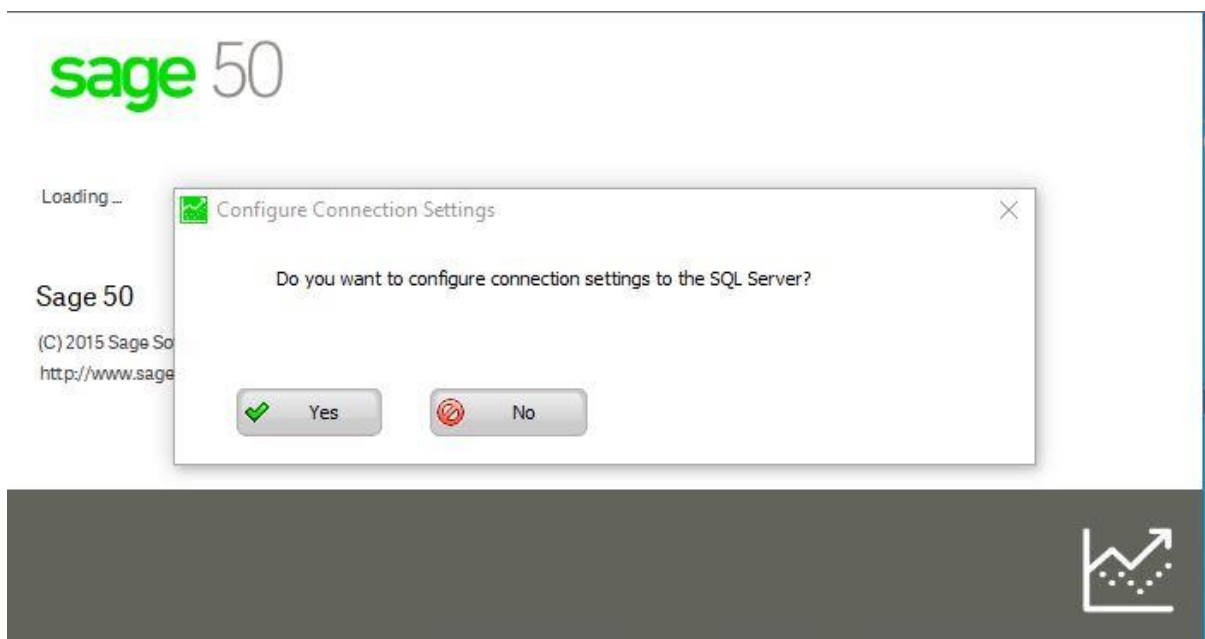
Information This document may contain information of a sensitive nature. This information should not be given to persons other than those who are involved in the Project, Name project or who will become involved during the lifecycle

Document Change Control

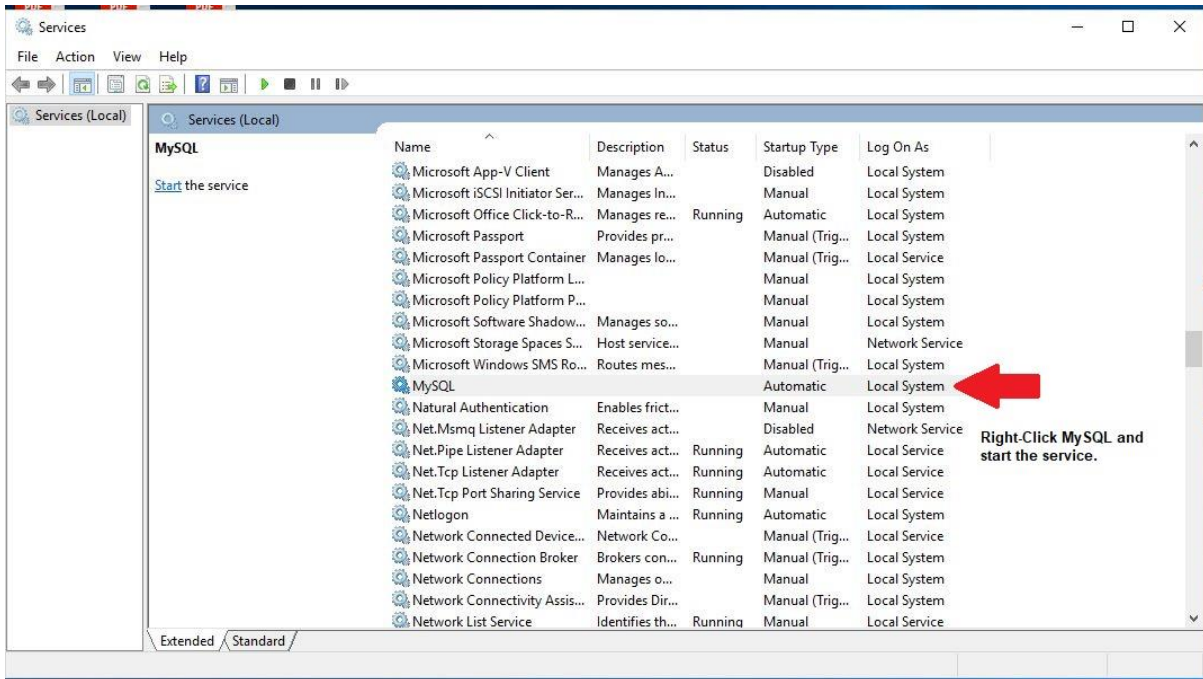
Version	Date	Author	Summary of Changes
1.9.3.7	14/05/2018	Steven	Initial Creation

How to login Sage 50 when error reads:

Click 'OK', and proceed to next message box:



Click 'No' for the above message box. Then proceed to open Control Panel → Administrative Tools → Services. Look for MySQL as shown below:



When you see the screen menu above, highlight MySQL and right-click it. Start the service. Then launch the Sage 50 again. You should be able to login after this.